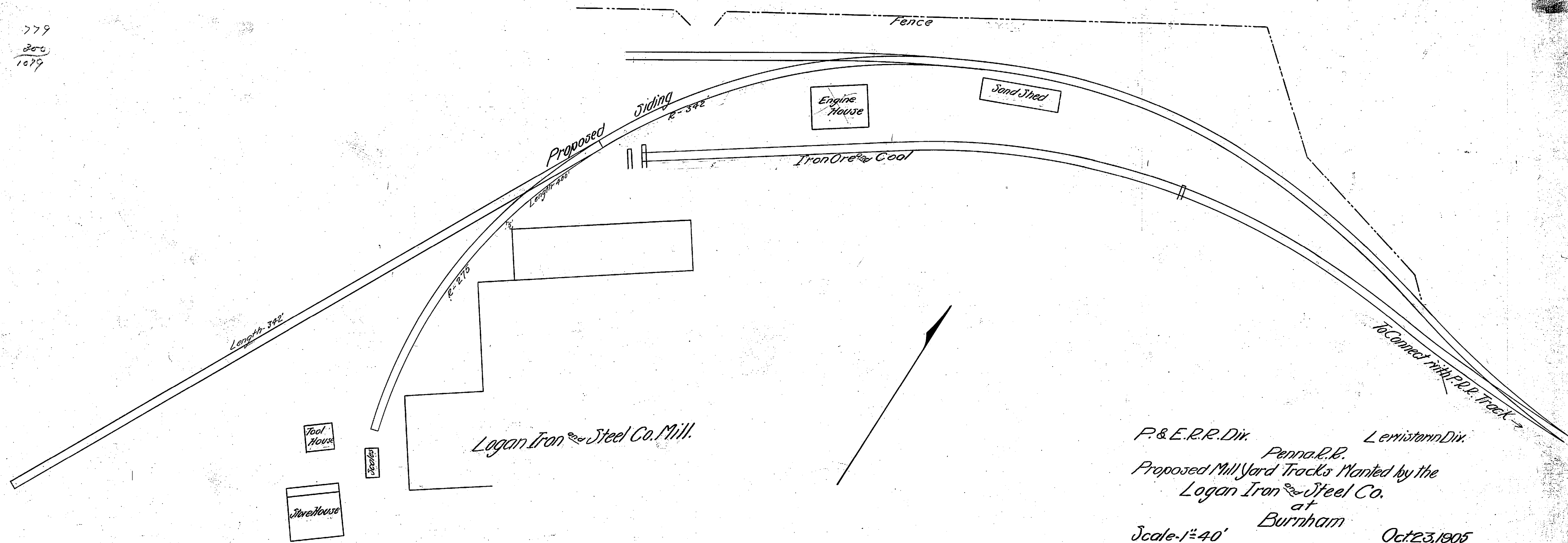


Estimate  
 742 ft track @ 12¢ rail @ 12¢ 779  
 2 Connections 300  
 1079



P. & E. R. R. Div.      Lemistown Div.  
 Penna. R. R.  
 Proposed Mill Yard Tracks Wanted by the  
 Logan Iron and Steel Co.  
 at  
 Burnham  
 Scale - 1" = 40'      Oct 23, 1905  
 J. W. C.